

## Accessing Web Soil Survey

- Open the Web Soil Survey (WSS) site at: <http://websoilsurvey.nrcs.usda.gov> and click the "Start WSS" button.



### Step 1. Define Your Area of Interest (AOI)

Search	
Area of Interest	
Import AOI	
Quick Navigation	
Address	
State and County	
View	
State	Nebraska
County (optional)	Lancaster
View	
Soil Survey Area	
Latitude and Longitude	
PLSS (Section, Township, Range)	
Bureau of Land Management	
Department of Defense	
Forest Service	
National Park Service	
Hydrologic Unit	

- Several methods are available to zoom into a geographic area of interest. You can enter an address; select a state and county; enter section, township, and range information; or you can import a boundary file from your local computer to set the AOI.
- Click the "View" button to see the area.



- Use the zoom in tool (plus sign) to click and drag a rectangular box around a specific area. Repeat, as necessary, to zoom further.
- Select an AOI tool to draw a rectangular box or irregular polygon that defines the AOI and allows selection of associated soil data. Once the AOI has been defined, you can save it for use at a later date.

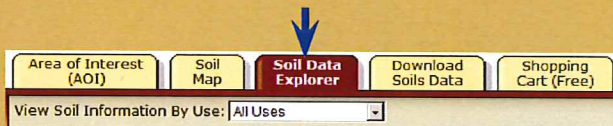
### Step 2. View and Print Your Soil Map



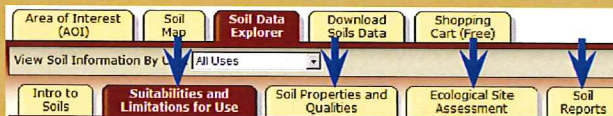
- Click on the "Soil Map" tab.
- Click on a map unit name to view a map unit description. Click the X to close the narrative.
- Print your soil map by clicking on the "Printable Version" button; then click the "View" button. On the browser menu bar, select File and Print; or click the print icon. Close the window.

### Step 3. Explore Your Soil Information

WSS generates thematic maps of soil interpretations and chemical or physical properties. Tabular data reports are also available.



- Click on the "Soil Data Explorer" tab.



- Click on the tabs below "Soil Data Explorer" and explore available information (default tab is "Suitabilities and Limitations for Use").

### Step 4. Add Items to the Free Shopping Cart and Check Out

WSS allows you to collect a variety of thematic maps and reports in the Shopping Cart, then print or download the content into one file or document.

- Soil map, map unit legend, and map unit descriptions are automatically added.



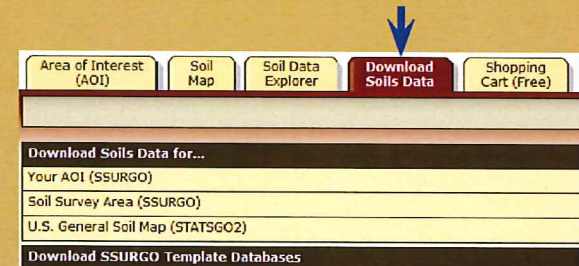
- Items viewed in Step 3 can be added by clicking the "Add to Shopping Cart" button.
- View your cart contents by clicking the "Shopping Cart (Free)" tab. Items checked on the Table of Contents are included.



- Get your Custom Soil Resource report.

- Click the "Check Out" button
- Select a delivery option and click OK

### Step 5. Download Soils Data for Use in GIS



WSS now allows you to download spatial and tabular SSURGO and STATSGO2 soils data for use in your local GIS. SSURGO data can be downloaded for your defined AOI or for a soil survey area. STATSGO2 data can be downloaded for individual states or for the whole U.S.

NOTE: At any time during Steps 2, 3, 4, or 5, you can redefine the soil map location by clicking on the "Area of Interest" tab and clicking the "Clear AOI" button. Repeat Step 1.

## Soil Survey Data

Soil survey data are a product of the National Cooperative Soil Survey, a joint effort of the USDA Natural Resources Conservation Service and other Federal agencies, State agencies including the Agricultural Experiment Stations, and local participants.

## Web Soil Survey (WSS)

The Web Soil Survey provides agricultural producers, agencies, Technical Service Providers, and others electronic access to relevant soil and related information needed to make land-use and management decisions. The WSS:

- Provides an alternative to traditional hardcopy publication,
- Provides the means for quicker delivery of information,
- Provides electronic access to full soil survey report content,
- Provides access to the most current data,
- Allows customers to get just the information they want, and
- Provides customers with the ability to download spatial and tabular soils data for use in GIS (replaces functionality of former Soil Data Mart).
- Additional help is available at "Contact Us" or by emailing soilshotline@lin.usda.gov.

Current, Custom  
Soil Maps & Reports:

Fast.

Free.

Friendly.

## Print a Hydric Soil Map

- Complete Steps 1, 2, and 3
- From the "Soil Data Explorer" tab, click on the "Suitabilities and Limitations for Use" tab
- Click on "Land Classifications"
- Click on "Hydric Rating by Map Unit"
- Click the "View Rating" button
- Click the "Legend" tab to open or close the map symbol legend
- Click the "Printable Version" button
- Click the "View" button
- On the browser menu bar, select File and Print; or click the print icon

## Print a Soil Chemical Properties Report

- Complete Steps 1, 2, and 3
- From the "Soil Data Explorer" tab, click the "Soil Reports" tab
- Click on "Soil Chemical Properties"
- Click on "Chemical Soil Properties"
- Click the "View Soil Report" button
- Click the "Printable Version" button
- Click the "View" button
- On the browser menu bar, select File and Print; or click the print icon



Natural Resources Conservation Service  
United States Department of Agriculture

National Cooperative Soil Survey

*USDA is an equal opportunity provider and employer.*

March 2014

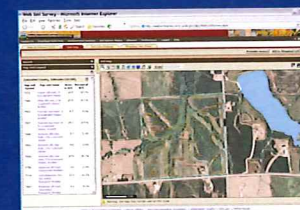


Natural Resources Conservation Service  
United States Department of Agriculture

# Web Soil Survey

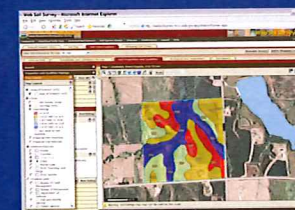
<http://websoilsurvey.nrcs.usda.gov>

## Define.



Search / Locate

## Collect.



Analyze Data

## Develop.



Custom Reports & Maps

"Helping People Help the Land"