



# PICKAWAY SOIL & WATER CONSERVATION DISTRICT

## 75th ANNIVERSARY

### 1944-2019

Volume 77, Issue 2

Conservation News — Published Quarterly

April 2020

Pickaway Soil & Water Conservation District, 110 Island Road, Suite D, Circleville, Ohio 43113

### Upcoming Events

*Dates Subject to Change*

**April 17**

Scholarship Apps Due

**April 21**

Board Meeting - 8 a.m.

**May 5**

Fish Sale Pick Up

**May 5**

Area 5 Envirothon

**May 19**

Board Meeting - 8 a.m.

**May 25**

Memorial Day  
OFFICE CLOSED

**June 16**

Board Meeting - 8 a.m.

**June 21 - 27**

Pickaway County Fair

**July 3**

Independence Day Observed  
OFFICE CLOSED

**July 14**

Board Meeting - 8 a.m.

**July 17**

Friday in the Park

**July 21 - 23 (tentative)**

Experience Earth Day Camp

### Office Details During COVID-19 Closures

The Pickaway SWCD and NRCS office is closed to the public at this time. Our staff continues to work diligently and we are happy to assist you via phone or email. Thank you for your consideration, and please be safe!

SWCD Cell Phone: 740-497-2175

NRCS Office Phone: 740-477-1693

Pheasants Forever Cell Phone: 402-641-6805

Emails:

tawn-seimer@pickawayswcd.org

katerina-sharp@pickawayswcd.org

shelley-steele@pickawayswcd.org

wesley-french@pickawayswcd.org

jrob-skidmore@pickawayswcd.org

justin.armintrout@usda.gov

lindsey.douglas@usda.gov

eliezer.ortiz@oh.usda.gov

phil.roe@usda.gov

hmullally@pheasantsforever.org



Check out our website at [www.pickawayswcd.org](http://www.pickawayswcd.org) for resources such as:

- Office News and Events
- Rental Equipment
- Residential Resources
- Education Program Info
- Scholarships
- Newsletters
- Tree and Fish Sales
- Contractor and Vendor Lists
- Poster Contest
- Affiliate Members
- Lending Library Book List
- Photo Gallery!

# Outreach

## Tree & Fish Sale Updates

Our Annual Tree Seedling Sale and Fish Fingerling Sale have definitely not gone as expected and have kept us all on our toes! The tree sapling portion of our tree sale was cancelled due to COVID-19 closures and shut-downs, and pick up dates and locations for the remainder of our tree sale items and for our fish sale have all been changed. At this point, everyone who ordered items through one or both of these sales should have been contacted about these changes.



If you have any questions, please reach out via email or through our District cell phone number (740-497-2175). We are very sorry for the inconvenience these changes have caused everyone, and we want to thank all who purchased items for your understanding and flexibility during this time.

Please watch for our January 2021 newsletter for details on next year's tree and fish sale, which will hopefully operate more like normal. Information for next year's sale will also be posted to our website in January 2021.

## Affiliate Memberships

THANK YOU to everyone who signed up to be an affiliate member this year! We appreciate all of your support to our office and dedication to conservation and education. We couldn't do all we do without your help. You are very much appreciated and truly make a difference! While we renew all memberships every January, anyone is welcome to send in a form at any time during the year. This year's affiliate members are:

### Corporate Members

The Savings Bank, Pickaway County Farm Bureau, Richard & Judy Clifton, Honeyrun Farms, Columbus Turf Nursery-Daniel Huggett, C. Randall & Cindy Metzger, Vickers Farms, Pickaway Farms-Jay & Marci Wippel

### Steward of the Land

Hartsock Ag, Seth & Kacie Beachy, Tim & Amy Colburn, John & Curtis Drummond, Dunlap Farms-John & Susie Dunlap, Arnold & Diane Gabriel, Clyde & Leslie Ohnewehr, Don Shaw & Sons/Shaw Farms, Wiseheart Farm

### Soil and Water Protector

Laurina Harper, Doug & Vicki Kohli, Daren & Susan Metzger, Todd Millard, Jane M. Poulson, Mark & Toni Schein

### Future Conservationist (Students)

Clara Wilson, Maggie Wilson, Mark Wilson

# Education & Outreach

## NACD Poster Contest

Pickaway SWCD hosted our annual poster contest again this year, and what a success! This year's theme, chosen by the National Association of Conservation Districts (NACD), was "Where Would We BEE Without Pollinators?". Students learned about the importance of pollinators, who our pollinators are, and the habits of honey bees. We had a total of 159 students from around Pickaway County compete in the contest. Posters were judged by grade category: 4th-6th grade and 7-9th grade. A first place, second place, and several honorable mentions were chosen from each category. The following students received recognition.



### 4th –6th Grade

- 1st - Mackenzie Ward, Salt Creek
- 2nd - Bella Neylon, Salt Creek
- HM - Victoria Guilfoyle, Salt Creek
- HM - Madeline Kohli, Salt Creek
- HM - Claire King, Salt Creek
- HM - Emma Pruitt, Circleville

### 7th-9th Grade

- 1st - Olivia Bright, McDowell
- 2nd - Lily Jarvis, McDowell
- HM - Tia Fowler, McDowell
- HM - Jenna Allison, McDowell
- HM - Clara Wilson, McDowell



We are also excited to announce that the winners of our 2019 contest, Savannah Conley (left) and Aurora O'Phelan (right), went on to also win the state contest in each of their age categories. The theme of last year's contest was "Life in the Soil: Dig Deeper". This is a huge accomplishment! Congrats ladies and good luck at the national contest!

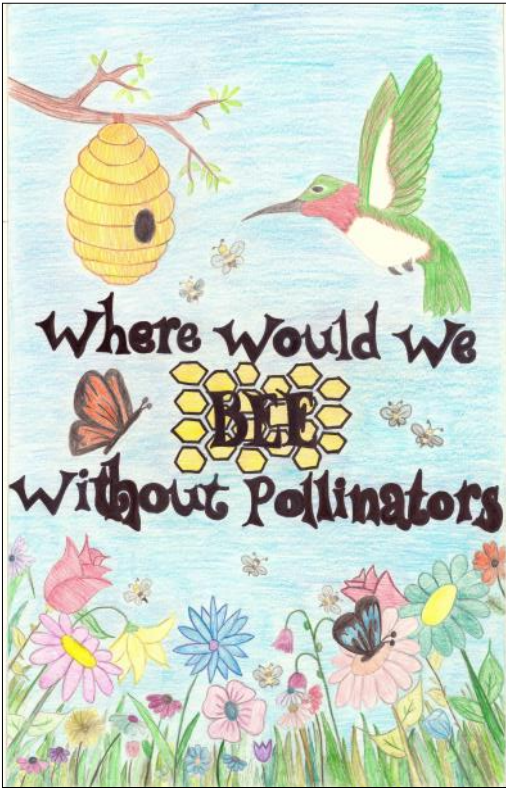
### Soil & Water Stewardship Week

The 65th Annual Soil & Water Stewardship Week will be celebrated **April 26 through May 2**. All top placing posters will be displayed at the Pickaway County Library and copied into a placemat distributed at Captain D's and Bob Evans during Stewardship Week. Be sure to check them out if you are in the area! The 1st place posters advance to the State Contest with a chance to advance to the National Contest. Wish these students good luck!





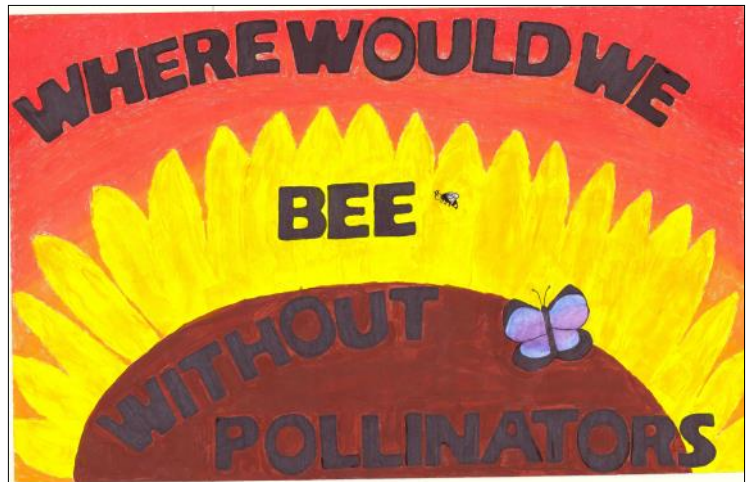
2020 Pickaway County NACD Poster Contest Winners 7-9th Grade



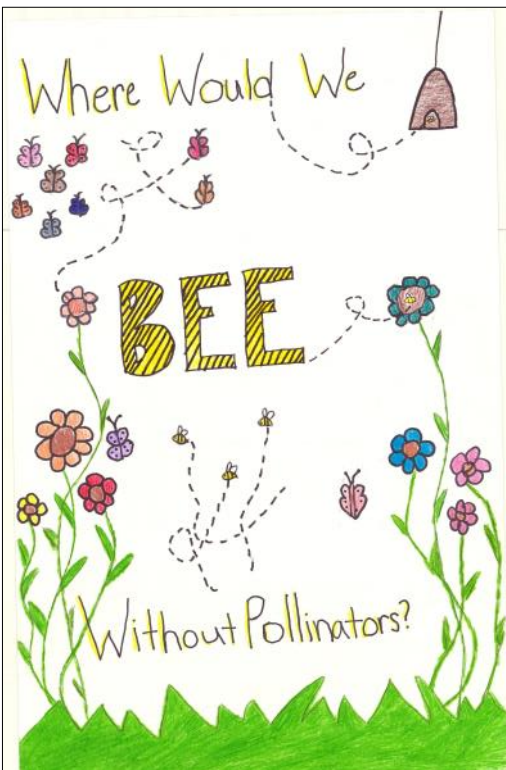
1st - Olivia Bright



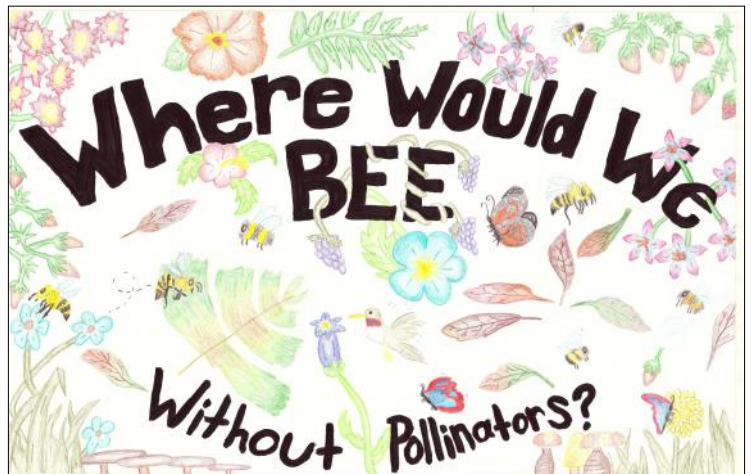
2nd - Lily Jarvis



HM - Tia Fowler



HM - Jenna Allison



HM - Clara Wilson



2020 Pickaway County NACD Poster Contest Winners 4-6th Grade



1st - Mackenzie Ward



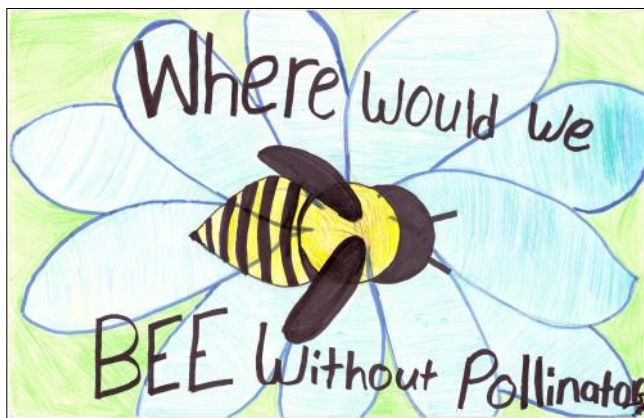
2nd - Bella Neylon



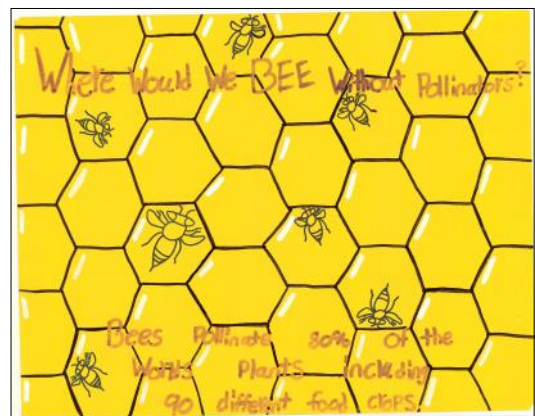
HM - Emma Pruitt



HM - Claire King



HM - Victoria Gulfoyle



HM - Madeline Kohli

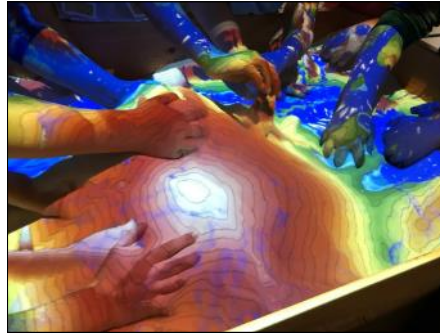


# Education

## School Programs Update

Our educator has been very busy this year visiting Pickaway County Schools! Since the start of the 2019-2020 school year, she has visited 149 classes! Some of our favorite programs this year has been with the use of our new augmented reality sandbox, which we were able to build thanks to a grant from the EPA's Education Fund. A special shout out to Scott Sharp, Chris Norris, and the Franklin County Engineers for their help building the sandbox, downloading and setting up the computer software, and aligning everything. We could not have done this without their help! The sandbox allows students to learn about topography, contour lines, geography, landforms, erosion, watersheds, and much more. It is a very cool visual, hands on, and educational tool that we are super excited to use and lucky to have!

Visit the Photo Gallery on our website to view more photos!



The augmented reality sandbox is the perfect visual and hands on educational tool for students, and the science and technology used is a cool bonus learning tool!

Learning about pollution with Francis the Fish and the Enviroscope.



Collecting soil samples outside the school and testing for texture, pH, nitrogen, potassium and phosphorus.

Our elementary students love the Pumpkin Patch program! But who doesn't love planting pumpkins and learning about life cycles?



Exploring the soil tunnel and tracing our food back to the soil.

Reusing old paper to make new paper. We discuss recycling and the paper making process before making our own paper.

ID and counting macros to determine stream quality.

# Upcoming Events

## Donald E. Minor Memorial Scholarship Applications due April 17

The Donald E. Minor Scholarship was created by the Pickaway SWCD Board of Supervisors in memory of Donald E. Minor, Sr. and his 25 years of service to the board and community. Mr. Minor began as a supervisor in 1985 and served on the board until he passed in October 2010. Funds from the scholarship are currently accumulated from Affiliate Memberships and Pumpkin Show parking lot fees. The award is available to any Pickaway County High School or Home School Senior who will be majoring in Agriculture or Natural Resources. The scholarships are for the purpose of continuing higher education at a two- or four-year college or university. Last year we were able to give out scholarships to three students! Details and applications can be found on our website. The deadline to apply is Friday, April 17, 2020. Please help us spread the word to any graduating students who may be able to use this scholarship and meet the qualifications.

## Experience Earth Day Camp

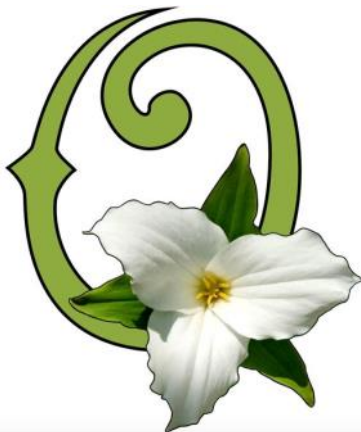
Planning for Experience Earth Camp has already begun! This year we are excited to be partnering with the Pickaway County Park District and RPHF Solid Waste District to make camp even better than last year. EE Camp is for students in Pickaway County who are about to enter 4th or 5th grade. Students will have the opportunity to learn about nature and wildlife while enjoying the beautiful outdoors. We are planning to have camp in late July, but don't have the dates finalized quite yet. More detailed information will be available on our website soon!

## Pickaway County Fair

Come find us at the Pickaway County Fair! We are hoping to have a display and our augmented reality sandbox set up this year.

Follow us on Facebook @Pickaway Soil and Water Conservation District to keep up to date with what we are doing and to see photos we post from school programs and SWCD events!

## April is Ohio Native Plant Month



April is Ohio Native Plant Month! Be on the look out for the Green "O" with the Great White Trillium (Ohio's State Wildflower). From here on out, this logo will represent Native Plant events in Ohio including plant sales, wildflower walks, educational events, planting native plants, or removing invasive plants. Check out our Facebook page throughout the month to see posts on native Ohio plants!

In Ohio, we have over 1000 native trees, shrubs, perennials, vines and grasses that are important to our pollinators, birds, insects, and all wildlife, including humans! They are part of an intricate, balanced web that helps to filter and clean our drinking water, remove contaminants from the air we breathe, cool our planet, and feed the bees that pollinate most of our food crops. At the very core of this elaborate system are our native plants.



# Upcoming Events

## 50th Anniversary of Earth Day

**On April 22, 1970**, 20 million Americans, 10% of the U.S. population at the time, took to the streets, college campuses, and in hundreds of city parks and auditoriums to protest environmental ignorance and demand a new way forward for our planet. Earth Day was a unified response to an environment in crisis - oil spills, smog, litter, rivers so polluted they literally caught fire! Some may recall the burning of the Cuyahoga River, which inspired Randy Newman to write the song, "Burn On" "...Big River". Rachel Carson's book "Silent Spring", coming out big in 1962, set the stage for concern of our tainted Earth; siting evidence between pollution and public health. Fifty years ago people joined together in spirit and in action. Coming together to express their concern for the state of our environment, to motivate others to change their daily habits by keeping the welfare of our Earth always at the forefront of their minds.

The first Earth Day founder, Senator Gaylord Nelson of Wisconsin, came up with this idea for a national day to focus on the environment. He recruited 25 year old Dennis Hayes of Harvard to be the national coordinator, launching a wave of action across the country. Earth Day 1970 helped bring about the passage of landmark environmental laws in the United States. The Clean Air, Clean Water and Endangered Species Acts were created in response, as well as the creation of the Environmental Protection Agency (EPA). In 1990, Earth Day went global, mobilizing 200 million people in 141 countries. Many countries adopted similar laws. Now, each year more than a billion people participate and over 190 countries are engaged, making this a day (and many times an Earth Week) of action to provoke positive change. Let's celebrate Earth Day every day!

~Written By Penny Cox (Perry SWCD) & Katrina Carpenter (Perry County Waste Reduction and Recycling)





# Technical Corner

## Using LIDAR to Conserve and Manage Pickaway County's Natural Resources

By: Shelley Steele and Wes French, District Technicians

The technicians at Pickaway Soil and Water Conservation District (SWCD) are no strangers to LIDAR, or it's data and applications in the realm of soil, water, and natural resources conservation and management. So, you may ask, what is LIDAR and how is Pickaway SWCD using it to help our agricultural producers and residents in the county?

### What is LIDAR?

LIDAR (LIght Detection And Ranging) is a remote sensing tool that provides high resolution, three dimensional, and spatial information about the land. It includes an airborne laser-scanner that is mounted to an aircraft. The scanned flyover works with GPS and the inertial measurement unit (IMU) to create an accurate survey that is a point cloud where every point has an x, y, and z coordinate. These coordinates are defined with numerous attributes such as land classification, intensity, slope, and scan angle. Additionally, other attributes can be calculated and tell us more about the landscape.

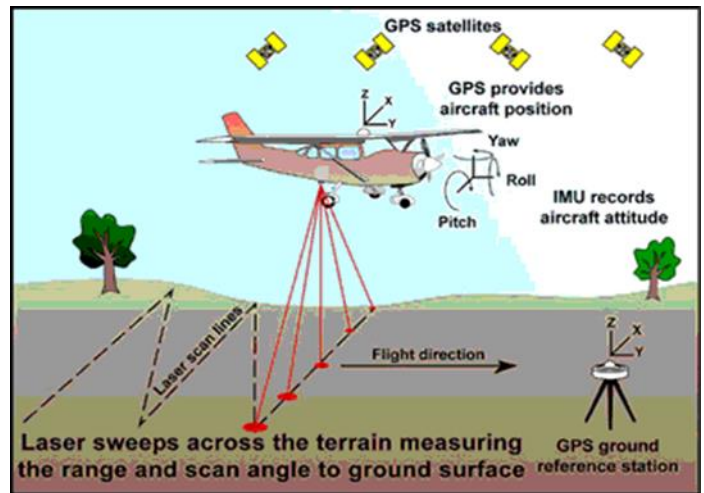


Photo Credit: <https://lidarnews.com/articles/lidar-system-accuracy/>

### Using LIDAR at Pickaway SWCD

Pickaway SWCD uses LIDAR to produce many maps and reports that help agricultural producers and residents in our county make informed decisions about the management and conservation of their land's natural resources. Additionally, the LIDAR data helps the district technical staff make informed decisions when designing conservation practices and evaluating drainage problems. Below are some examples of these LIDAR based maps and reports.

#### Topographic Map:

A topographic map can be generated from LIDAR data and a DEM (digital elevation model) at Pickaway SWCD. A topographic map displays the elevations of the landscape and can help one decide where to build a home on their lot or help a farmer locate potential wet areas in their field that need drained. Land elevations also aid in drainage and waterway design.



Photo Credit: <https://www.greenbelly.co/pages/contour-lines>

# Technical Corner Continued..

## Erosion Control:

Informed decisions about erosion control can be made by utilizing LIDAR-based maps that display water flow. A streams network map can be generated and obtained at Pickaway SWCD. These maps allow one to pinpoint areas in their landscape that experiences the concentration of water flow. Then these highly erodible areas can be addressed through the best conservation management practice.

## Watershed Delineation:

A watershed delineation map can be obtained for your property or field from Pickaway SWCD. These maps define a particular outlet and delineate a subbasin(s) that contributes runoff and water flow to that user-defined outlet. This allows land owners and managers to know how many surrounding acres and the average slope of those acres that run to a particular drainage outlet on their property. Furthermore, watershed delineation helps with informed decision making when solving drainage problems and designing conservation practices. Through watershed delineation, an estimate for runoff and peak discharge for the landscape in question can be calculated.

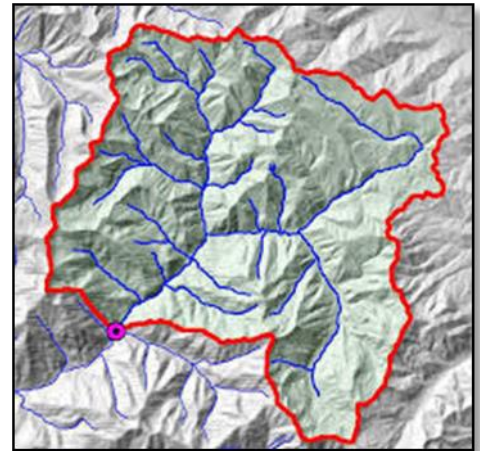


Photo Credit: <https://bit.ly/2WUmPu1>

## Soils Mapping:

Soils mapping is an important tool in making informed decisions for both residents and agricultural producers in the county. This is why Pickaway SWCD is always available to provide you with a soils map or walk you through how to use Web Soil Survey. A soils map can tell you how feasible the soil is on your land for different applications. For example, a landowner deciding where to construct their on-site sewage system. Additionally, soil maps can help agricultural producers in the county by revealing soils that are more saturated and harder to drain and how the soils correspond with crop inputs and yields.



Photo Credit: <https://bit.ly/2xF3DFW>

## **Come and See Us!**

The technical staff at Pickaway SWCD is here and eager to help you seek the information you need to make informed decisions on your land. Please note that the information and data we provide is not approved for design and construction purposes, and it is highly recommended that you consult with a professional engineer or contractor. Pickaway SWCD has a list of professional contractors available at the office or on our website at [pickawayswcd.org](http://pickawayswcd.org).



A special CRP signup, CRP Grasslands, is going on from now until May 15th. If interested, please contact the Farm Service Agency via phone 740-477-1691.



United States Department of Agriculture

## Farm Service Agency

# Conservation Reserve Program (CRP) GRASSLANDS SIGNUP

FACT SHEET  
March 2020

### Overview (Signup 2020)

The Conservation Reserve Program (CRP) Grasslands is part of the Conservation Reserve Program, a federally funded voluntary program that contracts with agricultural producers so that environmentally sensitive agricultural land is protected and used for conservation benefits.

With CRP Grasslands, landowners and operators can protect grassland, including rangeland and pastureland, and certain other lands, while maintaining the areas as grazing lands. The program emphasizes support for grazing operations, plant and animal biodiversity and grassland and land containing shrubs and forbs under the greatest threat of conversion. Participants receive annual payments and cost-share assistance. Contract duration is either 10 or 15 years.

CRP Grasslands is authorized by the 2014 Farm Bill. The U.S. Department of Agriculture (USDA) FSA administers the program on behalf of the USDA Commodity Credit Corporation (CCC).

### Benefits

Protecting grasslands contributes positively to the economy of many regions, provides biodiversity of plant and animal populations and improves environmental quality.

### How the Program Works

Participants retain the right to conduct common grazing practices, produce hay, mow or harvest for seed production (subject to certain restrictions during the nesting season of bird species that are in significant

decline or those that are protected under federal or state law), conduct fire rehabilitation and construct firebreaks and fences.

### Ranking Land Offered for CRP Grasslands

Interested participants may submit an offer with the USDA FSA from March 16 to May 15, 2020. These offers will be reviewed to determine which offers can be approved using applicable CRP Grasslands Ranking Factors. FSA collects data for each of the ranking factors based on the relative benefits for the land offered. Each eligible offer is ranked in comparison to all other eligible offers and selections for acceptance are made from that ranking.

FSA uses the following ranking factors, including:

- Existence of expiring CRP;
- Existing Grassland;
- Existing Multi-species cover and predominance of native species;
- State Focus Area (land-based) determined in consultation with State Technical Committee;
- Applicant is an eligible Beginning, Veteran, or Socially Disadvantaged farmer or rancher;
- Existing Small Livestock Operation;
- Cost; and
- Other factors as determined by FSA

# 2019 Annual Report

\*A PDF of our 2019 Annual Report can be found on our website.\*

## Pickaway SWCD Staff



Pickaway SWCD Staff (left to right)

<b>Tawn Seimer</b>	<b>Administrator</b>
<b>Wes French</b>	<b>Technician</b>
<b>Rob Skidmore</b>	<b>Technician</b>
<b>Shelley Steele</b>	<b>Technician</b>
<b>Katerina Sharp</b>	<b>Education &amp; Outreach</b>

### Pickaway Soil & Water Conservation District

Phone: 740-477-1693 Fax: 740-477-3327 Website: pickawayswcd.org

#### Office Staff

Tawn Seimer, District Administrator  
Shelley Steele, District Technician  
Wesley French, District Technician  
Rob Skidmore, District Technician  
Katerina Sharp, Education/Outreach Coordinator  
Justin Armintrout, District Conservationist  
Eliezer Ortiz-Barbosa, Soil Conservationist  
Phil Roe, Agriculture Conservation Experienced Service Enrollee  
Lindsey Douglas, Civil Engineering Technician  
Hannah Mullally, Ohio Farm Bill Wildlife Biologist, Pheasants/Quail Forever

#### PSWCD Board

Steve Hawkins, Chairman; Matt Anderson, Vice Chairman; Barbara Martindale, Secretary; Bill Black, Treasurer & Fiscal Agent; Clyde Ohnewehr, Member

#### Pickaway County Agencies-Phone Numbers

Farm Service Agency	740-477-1691
Pickaway County Commissioners	740-474-6093
Jason Van Houten-ODNR Service Forester	614-265-6703



#### Affiliate Members

##### **Corporate Members**

The Savings Bank, Pickaway County Farm Bureau, Richard & Judy Clifton, Honeyrun Farms, Columbus Turf Nursery-Daniel Huggett, C. Randall & Cindy Metzger, Vickers Farms, Pickaway Farms-Jay & Marci Wippel

##### **Steward of the Land**

Hartsock Ag, Seth & Kacie Beachy, Tim & Amy Colburn, John & Curtis Drummond, Dunlap Farms-John & Susie Dunlap, Arnold & Diane Gabriel, Clyde & Leslie Ohnewehr, Don Shaw & Sons/Shaw Farms, Wiseheart Farm

##### **Soil and Water Protector**

Laurina Harper, Doug & Vicki Kohli, Daren & Susan Metzger, Todd Millard, Jane M. Poulson, Mark & Toni Schein

##### **Future Conservationist (Students)**

Clara Wilson, Maggie Wilson, Mark Wilson

OSU Extension	740-474-7534
Pickaway County Engineer	740-474-3360
Division 1 ODNR	614-644-3925